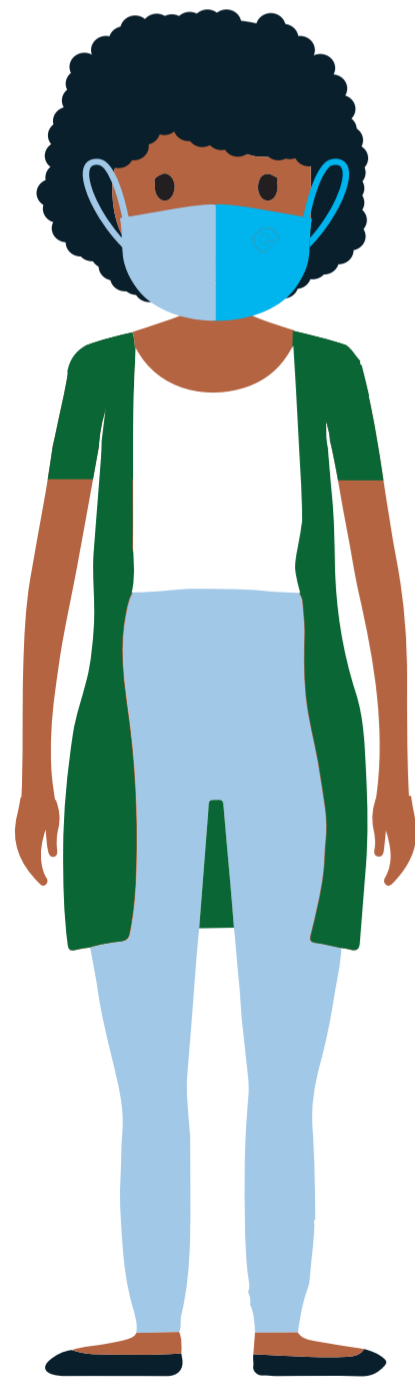
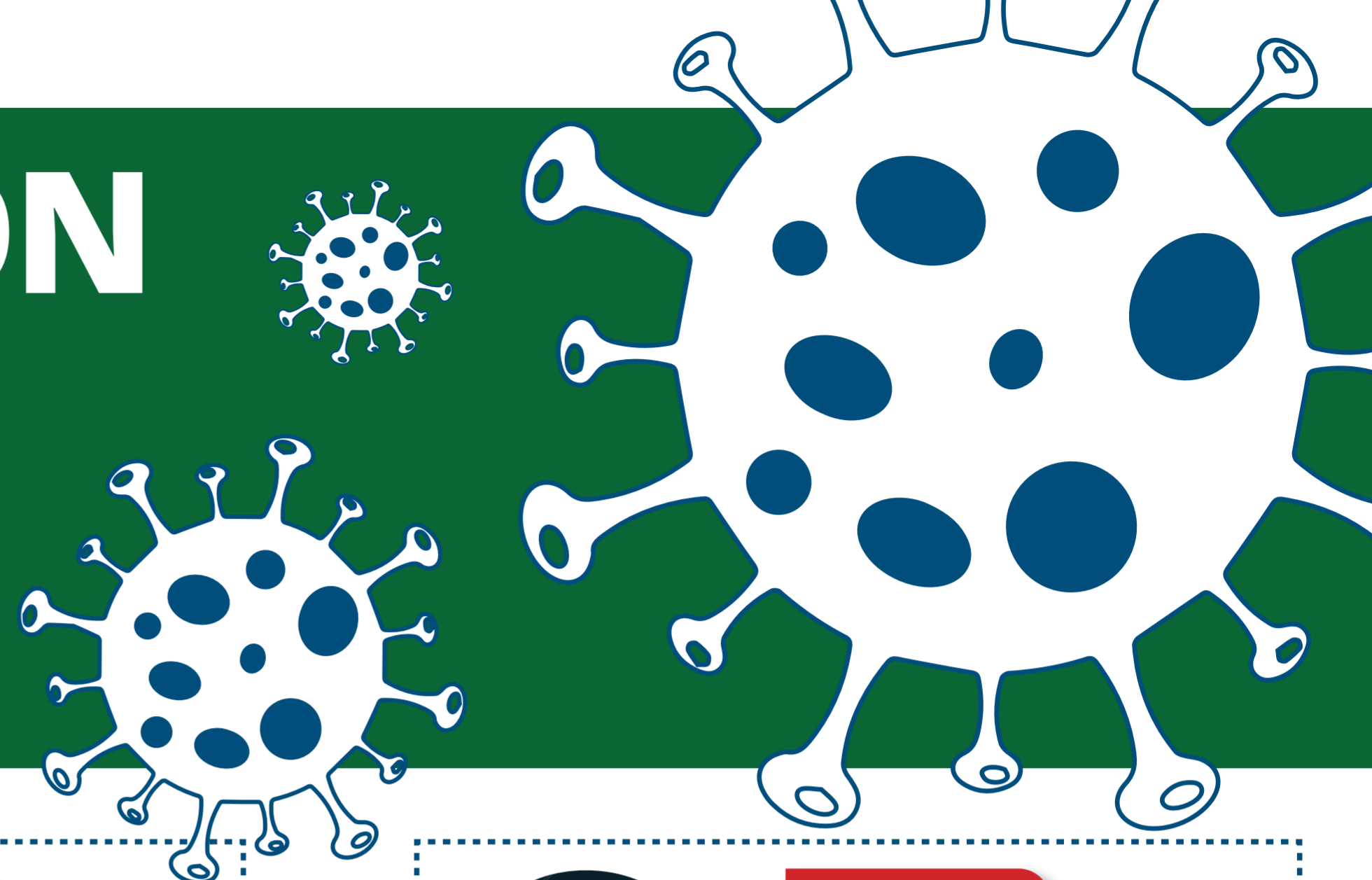


COVID-19 PROTECTION For Healthcare Workers

Minimise risk of self-contamination and transmission to others:

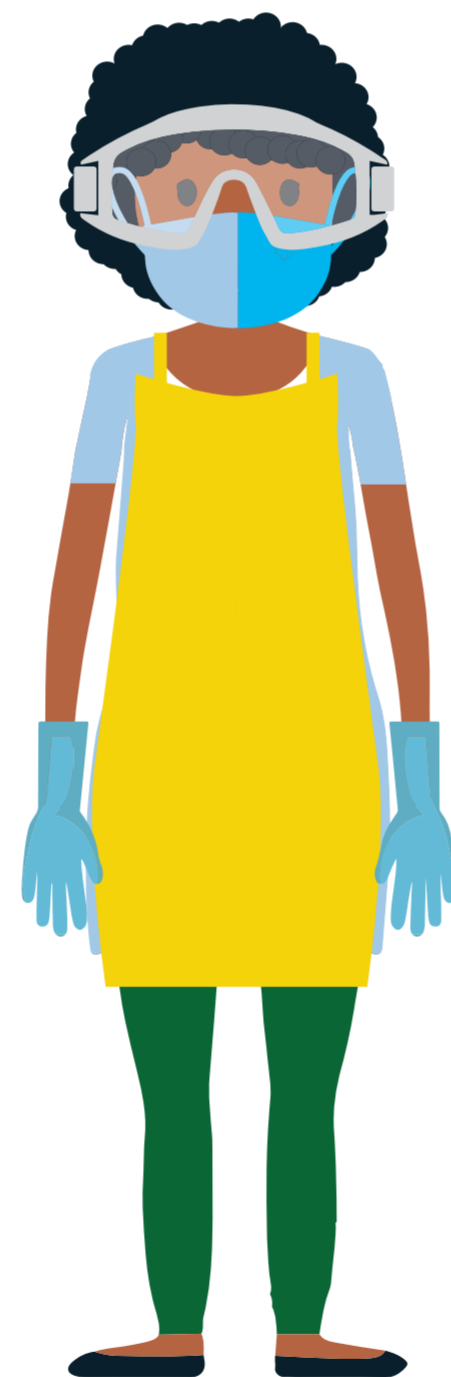
- Practise good hand hygiene
- Use correct principles of cleaning
- Efficient use of PPE including safe putting on and removal



PPE

for COVID-19
low-risk areas

- Clinical area: Wear a surgical mask
- Non-clinical area: Wear a cloth mask
- **NO OTHER PPE IS NEEDED if you are not in direct contact** with patients with confirmed/suspected COVID-19
- **Do NOT use PPE if not indicated - we have a global shortage**



PPE

for high-risk
areas (confirmed/
suspected COVID-19
cases)

- Non-sterile gloves
- Visor or goggles
- Plastic apron
- Surgical mask



PPE

for aerosol-generating
procedures in
COVID-19 high risk
areas

- Non-sterile gloves
- Visor or goggles
- Fluid-resistant apron or gown
- Well-fitted **N95 respirator** for aerosol-generating procedures only

e.g. Tracheal intubation, non-invasive ventilation and COVID-19 specimen collection, among others.



health

Department:
Health
REPUBLIC OF SOUTH AFRICA



Source: NDoH. COVID-19 Disease: Infection Prevention and Control Guidelines. 2020
Adapted from: NHS - University Hospitals Birmingham, NHS Foundation Trust. Covid-19 A visual guide to safe PPE, Version 1. 1 May 2020



Website: www.sacoronavirus.co.za
Emergency Hotline: 0800 029 999
WhatsApp Support Line: 0600-123456